



Manatron Congratulates Digital Award Recipients

At Manatron, we know that providing our customers access to the latest technology is an essential ingredient to their ongoing success. The world of technology is constantly changing – there's always an upgrade for this and an improvement for that. We strive to remain on the cutting edge of this ever-changing technology while continuing to maintain our current systems. This is a difficult balance, but one that is necessary for our success and that of our customers because we understand the pressures you face on a daily basis. From our first installation until today, Manatron continually invests to produce the best solution-based products and services for our clients.

Manatron would like to recognize those of our customers who have recently been awarded leaders in technology for government in 2006, by the Center for Digital Government and NACo.

150,000-249,999 population:

Hamilton County, Indiana
Clermont County, Ohio
Horry County, South Carolina

Less than 150,000 population:

Olmsted County, Minnesota
Stearns County, Minnesota
Delaware County, Ohio
Albemarle County, Virginia



Top Digital Cities

250,000 or more population:

City of Nashville, Tennessee

125,000-249,999 population:

City of Richmond, Virginia
City of Hampton, Virginia (tie)

75,000-124,999 population:

City of Roanoke, Virginia (tie)

30,000-74,999 population:

City of Lynchburg, Virginia

Congratulations to all of these jurisdictions. You are to be commended. Your work towards becoming highly technical organizations pushes us everyday to do the same. Keep up the good work – we certainly will.



Top Digital Counties

500,000 or more population:

San Diego County, California
Snohomish County, Washington

250,000-499,999 population:

Prince William County, Virginia
Douglas County, Colorado
Marion County, Florida

Contents

CEO's Column
page 2



Walton County, FL
Spotlight
page 3



GIS/CAMA Conference
Review
page 5



GIS Solutions
page 6



CEO's Column



I am proud that Manatron has reported three consecutive quarters of profitability since our restructuring of the business that occurred last May. Our revenue growth has been over 20% for both the third quarter and nine month period that ended on January 31, and our operating profits for all three quarters have improved sequentially. Your continued support continues to be a large part of our success. We thank you for that, as well as the confidence you have placed in us.

While our shareholders are benefiting from our financial success, I want to remind everyone that our profits enable Manatron to consistently invest in our products and our people. We have continued to make significant investments as evidenced by the improvements in GRM, MVP Tax, ProVal and eGovernment.

Our growth has been accelerated by the addition of our fourth GRM contract in South Carolina in the last year and our first two in Kansas during the last couple of months. In South Carolina, Beaufort County is the newest client to choose our GRM Tax and CAMA integrated solution. In the state of Kansas, both the

Unified Government of Wyandotte County--Kansas City and Sedgwick County (Wichita) have signed contracts for GRM Tax.

Because of our strategic direction and the success of our products and services, we continue to attract the attention of other companies. As you may know, Constellation Software, a Canadian company who acquires, manages and builds software businesses, has sent us two unsolicited proposals during the last four months offering to purchase Manatron. While this created a bit of a distraction for a lot of people, including our clients, it did validate that we are on the right track and improving every day. Otherwise, why would they be interested? We trust that you all know by now that we politely rejected both proposals.

Whether it is a recent new market like the state of Kansas or existing ones like Illinois, Indiana, Ohio or Florida, who have worked with Manatron for many years, rest assured that we will continue to work hard to earn and keep your trust. On behalf of all of us at Manatron, we thank you for allowing us to continue to be of service to you and your constituents.

Please don't hesitate to email us with your comments, questions or suggestions at manatron.standard@manatron.com or call us, toll-free at 1-866-471-2900. We look forward to hearing from you.

Sincerely
Paul Sylvester
CEO & Co-Chairman

Investor Update:

Manatron Announces Q3 and Nine Month Earnings

On March 12th, Manatron announced its financial results for the third quarter of fiscal 2007, which ended January 31, 2007. The Company reported net revenues of \$10.3 million, a 28.7 percent increase over net revenues of \$8.0 million recognized in last year's same period. Operating income improved to \$589,046 for the quarter, a positive swing of \$2.8 million versus the operating loss of \$2.2 million that was reported for third quarter of the prior fiscal year.

For the nine months ended January 31, 2007, the Company reported net revenues of \$31.7 million, a 20.1 percent increase over net revenues of \$26.4 million posted for the nine months ended January 31, 2006.

"Our acquisitions of ASIX and Plexis combined with solid organic growth and the impact of our cost reduction efforts have resulted in significant improvements in our financial performance," said Paul R. Sylvester, Manatron's Chief Executive Officer. "Accelerating market acceptance for our products and a strong portfolio of referenceable accounts has enabled us to exceed the \$10 million mark in revenues for each of the first three quarters of our current fiscal year. More importantly, the revenue growth and our continued focus on managing expenses has allowed us to demonstrate sequential improvement in our gross profit, gross margins, operating income and net income during the first three quarters."

Select Financials (As of 5/07/07)

Fiscal Year End:	April 30
Current Price (5/07/07):	\$8.99
52-Week Range:	\$5.55 - \$10.35
Shares Outstanding:	5.084 Million
Market Cap:	\$45.70 Million

In the Spotlight: Walton County, Florida

Manatron MVP Tax

Located on the Emerald Coast of Florida in the center of the panhandle, Walton County is home to some of the most beautiful beaches in the world, including 16 certified Blue Wave Beaches. Bordered by Alabama on the north and the Gulf of Mexico on the south, the County boasts 26 miles of Gulf Coast property. Walton County is one of the fastest growing counties in the state of Florida and is ranked as one of the top 65 fastest growing counties in the US. The county's current population is approximately 60,000.



In 2004, the Tax Collector's office was in need of a replacement for an outdated tax system that was not able to be updated to newer technology. After a bidding process, the County selected Manatron for their vast experience in the state of Florida and its up-to-date technology. The County realized that the Windows®-based MVP Tax could meet the current as well as future needs and requirements of the Tax Collectors office.

Rhonda Skipper, Walton County's Tax Collector and her staff handle property tax billing and collection for the County's 78,000 parcels, as well as motor vehicle and vessel registration, Hunting & Fishing license registration and beach permits. Between its two Tax Collector office locations, the County handles, on average, 10,000 transactions per month. In 2005, the County collected \$126 million in tax bills – all on the Manatron MVP Tax system.

"We are very happy with the Manatron

solution," stated Chief Deputy Tax Collector, Cory Godwin. "Manatron MVP Tax is the product you want to go with today and Manatron customers will certainly benefit from new technologies they will offer in the future."

By selecting MVP Tax, the Walton County Tax Collector's office was able to implement several new processes including Web-based tax searches & collection and a high-speed remittance

processing system.

Additionally, in 2006, the Tax Collector's office conducted the County's first Internet Tax Certificate Sale through Manatron's partner Bid4Assets. Previously, tax certificates were sold at a live auction conducted at the courthouse and could take up to two weeks to complete the sale process. This year's auction was completed in four hours and increased the number of bidders from 47 in 2005 to over 1,200. Sales increased from \$1.9 million to over \$3.3 million and over 900,000 bids were accepted. "It was an incredible success and we're very pleased with the outcome of the sale" said Tax Collector Rhonda Skipper.

The County was grateful to have a Manatron support person to call directly to help them move smoothly through the process of integrating these systems. "Manatron's support staff has always been very helpful when our staff calls with any type of question," added Godwin. "They really go above and beyond to make sure that they help us with anything we need their assistance with."

Customer Focused

Manatron Signs Two New Customers in Kansas

Manatron recently announced that it has signed two new customers in the State of Kansas to provide its GRM Property Tax solution, Manatron Tax. These new customers are the Unified Government of Wyandotte County/Kansas City and Sedgwick County.

Wyandotte County is located in the north eastern section of Kansas, includes Kansas City, Kansas and is one of 105 counties in the state. Its population is estimated at 160,000 and there are approximately 70,000 real and personal parcels of property in the county.

Sedgwick County is located in south central Kansas and is one of 105 counties in the State. Its population is estimated at 500,000 and there are approximately 266,000 real and personal parcels of property in the county. The county seat is Wichita.

Both jurisdictions will be using Manatron Tax to collect real estate, personal property, intangible, motor vehicle, special assessments and other miscellaneous taxes for the county, as well as all of the cities, townships, school districts and other taxing jurisdictions within the counties.

"We are excited about the opportunity to work on two large new accounts in the same state," said Bill McKinzie, Manatron's President and Chief Operating Officer. "This will allow us to leverage our costs more effectively and will accelerate the completion of these projects as we expect to utilize many of the same people to work on the implementation of our GRM solution."

In the News:

Clinton County, Pennsylvania and Manatron Partner for Countywide Revaluation

Virus Protection Tips

Virus attacks and hackers cost companies thousands of dollars in time and lost productivity. Following these few simple steps will help minimize your risk of infection, data loss and frustration.

1. Apply the appropriate Microsoft Critical Updates and Service Packs to your computer. Most viruses are written to exploit known weakness in Microsoft products. Applying the most current patches will help minimize your exposure to known security issues.
2. Install a virus protection software package on your computer. Be sure to configure this application to download current virus signature files often, typically weekly or less. Scheduling automatic computer scans on off-hours is also recommended.
3. Use a personal firewall to block intruders from accessing your system files and resources while on the Internet.

Many viruses are delivered through e-mail, often using file attachments. Be leery of unexpected e-mails with attachments. It is recommended to configure your e-mail server or e-mail client to block what Microsoft defines as Level 1 ("unsafe") attachments - those file extensions that may have script or code associated with them.

Following these simple steps will not guarantee you complete protection from virus attacks, but does provide a very reasonable defense.

Manatron recently announced that it is working with Clinton County, Pennsylvania to provide mass appraisal services and revalue all of the residential, commercial, agricultural and industrial property in Clinton County, which represents approximately 25,000 parcels. This marks the first reassessment of the County's properties since 1972. In addition, the County has purchased Manatron CAMA, Manatron's robust property appraisal software solution, to replace its manual, paper-based appraisal process.

Centrally located in Pennsylvania, Clinton County has a population of approximately 37,500 residents. Clinton County's property taxes are currently based on property values that were established after a countywide reappraisal that occurred in 1972. These property values were only adjusted by the County Assessor when additional external structures were added to an existing property or a countywide inflationary or market factor was determined. The County Assessor was not required to make any adjustments to property values for any internal remodeling or other external improvements.

Given the length of time that had passed since the last reassessment, the Clinton County Commissioners decided to initiate a countywide property reappraisal to ensure that all properties are valued uniformly and equitably based on fair market value so that the related taxes are fairly assessed to all their constituents. After a rigorous selection process, the Commissioners chose Manatron to perform the reassessment. The new CAMA system and property values will be finalized in May of 2008 in time for the 2009 tax bills.

In order to educate the community regarding the process of revaluation, the County and Manatron have jointly conducted over 20 public meetings to date and will complete about 45 total before the project is complete.

Manatron offers software solutions and a host of appraisal services designed to meet the multiple needs of Assessors and their jurisdictions. Manatron has been one of the premiere providers of mass revaluation appraisal, tax equalization and consulting services to local governments in the country for over 30 years. Using the technology of its appraisal software products, Manatron has developed a flexible, innovative methodology for appraisal delivery, which enables it to service jurisdictions of any size by meeting the specific requirements of each individual client.

The Clinton County Commissioners commented, "Our largest concern in undertaking a county wide property revaluation was the public's perception of the project. In Clinton County, Manatron has done an outstanding job implementing a public awareness and education program to ensure our taxpayers understand why we needed to perform a revaluation and how the process would work. Manatron was receptive to our concerns of tax fairness and responded to our needs."

"We are very excited about the opportunity to provide our CAMA solution and appraisal services to Clinton County," said Paul Sylvester, Manatron's Chief Executive Officer. "We have been working hard to expand our presence in the Pennsylvania market and are confident that the successful completion of this project will lead to other business in that state."

Manatron On the Move:

Events & Conferences

2007 Users Conference Information

The 10th Annual International ProVal Users and 3rd Annual Tax Users Group of Manatron Conferences will be held at the beautiful Marriott Tucson University Park in Tucson, Arizona. The conference dates are October 21-26, 2007.

The Marriot room rate will be \$119/night and the hotel provides great meeting facilities and plenty of restaurants for lunch and dinner right out of the door - just a short walk away. The pool is open year round and the scenery is spectacular. Check the hotel out at www.marriott.com/tusup.



Look for the conference brochure with additional details and information in the mail soon.

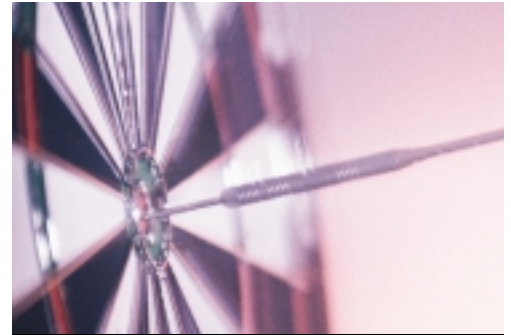
Review of 11th Annual Integrating GIS & CAMA Conference

Manatron attended the 11th Annual Integrating GIS & CAMA Conference, March 4-7 in Las Vegas.

Manatron was the Conference Platinum Sponsor and appeared in the exhibit hall with the other vendors. Several Manatron representatives also presented several classes covering various topics. In addition, Manatron held a cocktail party for conference attendees. The party



was co-sponsored by our great business partners who were also in attendance at the conference: ESRI, Woolpert, APEX, Sidwell, SDS and Pictometry. The get together was a huge success and everyone had a great time. Thank you to everyone who attended or stopped by the booth to say hello. We'll see you next year in New Orleans, February 25-28.



Noteworthy

Manatron recently announced new business in both Minnesota and South Carolina.

In late January, Manatron announced that it received a contract from the Minnesota Association of County Auditors, Treasurers, Auditors and Finance Officers (MACATFO) for its eGovernment software solution. The agreement with MACATFO is a volume purchase agreement that will enable individual counties in the state of Minnesota to enroll in a centralized, state-wide implementation of Manatron's on-line property tax collection package, CollectMax.

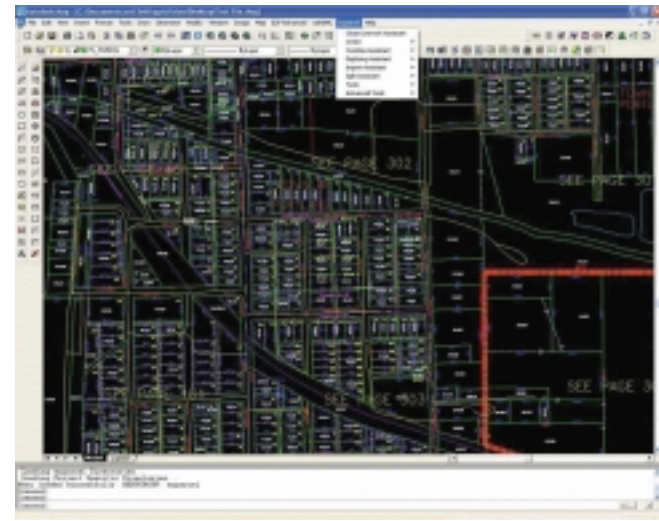
In addition, Manatron received a contract from Beaufort County, South Carolina for its GRM[®] suite of Property Management software and related professional services. This project includes integration to critical County business processes, such as GIS, permitting and work order management. Beaufort County is the fourth county in the State of South Carolina to contract with Manatron for its GRM software in the last thirteen months.

Manatron Updates: The Latest In Product Solutions

Manatron GIS Products and Services

Manatron has been providing expert Geographic Information System (GIS) Products and Services for more than a

decade. Manatron has emerged as a leader and innovator in GIS and CAMA integration, development and deployment for both the public and private sector. With access to more than 300 professionals ranging from engineers to appraisers to geographers, Manatron's GIS Products and Services deliver depth and expertise to every project.



ezparcel

Manatron has emerged as a leader and innovator in GIS and CAMA integration, development and deployment for both the public and private sector. With access to more than 300 professionals ranging from engineers to appraisers to geographers, Manatron's GIS Products and Services deliver depth and expertise to every project.

State-of-the-Art Technology

Manatron GIS Products are built using the latest technology based upon high performance database engines. At Manatron, we recognize today's world of rapidly changing technology, and we realize that being a company that stays current with the latest technological trends is a must. That is why Manatron invests heavily in research and development to continually

GIS Products

Manatron efinite

Manatron efinite allows public or private agencies access to their maps via the Internet. Built with the latest GIS development tools, efinite allows governmental agencies access to a fully integrated "GIS online" system including dynamic access to Manatron's eGovernment suite of products for CAMA and

Tax information. This easy to use solution makes maps available on any computer with an Internet connection.

Manatron Efinite mobile

Puts GIS Mapping on the Move

Manatron efinite mobile allows users to identify site locations immediately, on the road, anytime. Users view maps via a portable device such as a laptop computer or a tablet PC and, because the information is stored locally, a network or cellular connection is not required.

Built with ESRI's® suite of development tools, efinite mobile employs search capabilities for queries including, addresses, latitude/longitude coordinates, parcel numbers, intersections, road names and landmarks.

Manatron ezparcel

Manatron created ezparcel to provide a user-friendly interface for parcel mapping in a computer aided drafting (CAD) environment. Utilizing ezparcel allows individuals with little or no CAD experience the ability to use parcel mapping tools. Manatron ezparcel comes complete with many useful parcel assistants and various point and click tools that make manipulating CAD easy. ezparcel also contains an assortment of simple tools specific to parcel mapping.



efiniti

GIS Services

Along with Training and Support, General Consulting and Digital Orthophotography services, Manatron also offers E911 Mapping Services.

- E911 Pinpoint Addressing
- E911 ReAddressing
- Street Centerline Mapping
- Field Verification
- Address Map Maintenance

All the BUZZ:

Keeping You Informed

Quotable Quotes

"The Manatron GRM solution was the overwhelming choice of the Assessor's office staff in that it meets the mass appraisal and tax administration requirements needed for Beaufort County -- a unique and complex coastal real estate market."

Ed Hughes, Assessor at Beaufort County, SC

Calendar of Events/News

May

- 29-May 2:**
Georgia TC Tech
Stone Mt, GA
- 30-May 3:**
CA Assessors
Santa Barbara, CA
- 2-4:**
Assessors Assoc. of
Pennsylvania
Seven Springs Resort
- 2-4:**
TN Assoc. of
Assessing Officers
Paris, TN
- 7-9:**
IMAGIN
Kalamazoo, MI
- 8-11:**
SD Assessors
Aberdeen, SD
- 13-16:**
GA County Tax
Officials
Athens, GA
- 14:**
Ohio Users Meeting
Columbus, OH
- 15-18:**
OH Treasurers
Columbus, OH
- 16-19:**
Tier Technologies
Users
Philadelphia, PA

May

- 23-25:**
IN County Auditors

June

- 4-8:**
MN Computer Co-op
Alexandria, MN
- 6-8:**
NM Assoc. of Counties
Ruidoso, NM
- 10-12:**
OH County
Commissioners
Cuyahoga Falls, OH
- 10-13:**
FL Tax Collectors Spring
Tallahassee, FL
- 10-13:**
GFOA - Anaheim, CA
- 11-14:**
OH County Auditors
Cuyahoga Falls, OH
- 12-14:**
WA County Treasurers
Yakima, WA
- 12-15:**
CA Treasurers & Tax
Collectors
Santa Barbara, CA

June

- 13-15:**
OH County Recorders
- 13-15:**
WI County Treasurers
Appleton, WI
- 18-22:**
ESRI Users Conference
San Diego, CA
- 18-22:**
CO County Treasurers
Parker, CO

July

- 13-15:**
NACTFO
Richmond, VA
- 13-17:**
NACo
Richmond, VA
- 17-19:**
Florida Users Group
Tampa, FL
- 17-19:**
IACREOT
Charlotte, NC
- 25-27:**
Illinois Treasurers
Carbondale, IL

Any questions or feedback regarding the Newsletter please contact us at manatron.standard@manatron.com

For all the latest Manatron news and information please visit www.manatron.com. Or call 1.866.471.2900

Manatron Standard In the Works

July Issue

In the Spotlight
Coweta County, Georgia

Conferences:
Detailed User Group
Conference information

Partner Profile:
The Sidwell Company

Product Info:
Managed Offsite
Backup Services

For more information, please
visit www.manatron.com.

News
May 07

Volume 4, Issue 2

MANATRON

Manatron Standard

DIGITAL
COUNTIES
SURVEY

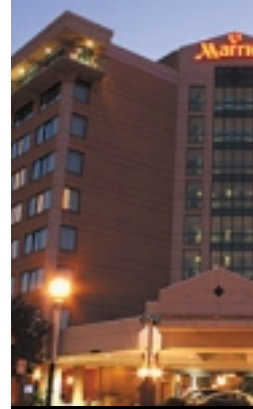
DIGITAL
CITIES
SURVEY



Investor Update
page 3



Virus Protection Tips
page 4



'07 Users Conference Info
page 5



GIS Solutions & Services
page 6

Digital Award Recipients, page 1

More Information Inside...

MANATRON
The power to manage well.

510 East Milham Avenue
Portage, Michigan 49002
www.manatron.com

Postage
paid here

Imprint area here

Postal barcode area here